



CUSTOM-ENGINEERED SHIELDING PRODUCTS

METEX has been a pioneer in EMI/RFI gasketing and shielding products for more than five decades. In fact, METEX developed the very first EMI/RFI gasket to help MIT solve a severe interference problem for the earliest high-power, high-frequency airborne radar.

That pioneering spirit is still alive today—with a complete line of military and commercial-grade EMI/RFI shielding solutions.

As communications and information technologies expand, the need to provide EMI/RFI solutions becomes more critical than ever before.



Complete support—
from technical review to
design and application
assistance



World-class EMI/RFI
manufacturing capabilities



TECHNICAL BULLETIN NUMBER 200



CONNECTOR GASKETS

Metex connector gaskets provide EMI shielding and environmental sealing for a wide array of connector types and sizes.

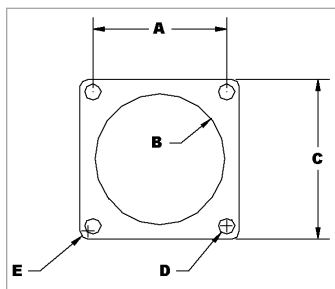
When a connector gasket is installed between the mounting flange and an enclosure bulkhead, the gasket is compressed between the two surfaces. The elastomer provides environmental sealing, and the conductive substrate or particles embedded in the elastomer creates a low impedance electrical path between the mating surfaces.

Material Selection Table

Metex Part No.	Material Description	Elastomer Type	Conductor Type
704-9215-XXXX	.020 thk silicone filled wire cloth	Silicone per AMS-3302D	Aluminum wire cloth, per AMS-4182
704-9225-XXXX	.020 thk neoprene filled wire cloth	Neoprene per AMS-3222C	Aluminum wire cloth, per AMS-4182
704-9311-XXXX	.030 thk silicone filled, expanded monel	Silicone per ZZ-R-765, CI-2, Grade 50	Nickel Copper alloy (Monel) per QQ-N-281-B
704-9313-XXXX	.030 thk fluoro-silicone filled expanded Monel	Fluoro-silicone per Mil-R-25988	Nickel Copper alloy (Monel) per QQ-N-281-B
707-9114-XXXX	.062 thk oriented monel wire in solid silicone	Silicone per ZZ-R-765, CI-2, Grade 50	Nickel Copper alloy (Monel) per QQ-N-281-B, .0045 dia.
707-9124-XXXX	.062 thk oriented aluminum wire in solid silicone	Silicone per ZZ-R-765, CI-2, Grade 50	Aluminum alloy 5056, wire diameter is .005"
707-9514-XXXX	.062 thk oriented monel wire in solid fluoro-silicone	Fluoro-silicone per Mil-R-25988	Nickel Copper alloy (Monel) per QQ-N-281-B, .0045 dia.
707-9524-XXXX	.062 thk oriented aluminum wire in solid fluoro-silicone	Fluoro-silicone per Mil-R-25988	Aluminum alloy 5056, wire diameter is .005"
720-9122-XXXX	.031 thk Silver plated glass filled silicone	Mil-G-83528 type M	Silver plated glass micro-spheres
720-9132-XXXX	.031 thk silver plated nickel filled silicone	Mil-G-83528 type L	Silver plated nickel particles
720-9142-XXXX	.031 thk silver plated aluminum filled silicone	Mil-G-83528 type B	Silver plated aluminum particles
720-9152-XXXX	.031 thk silver plated copper filled silicone	Mil-G-83528 type A	Silver plated copper particles
720-9162-XXXX	.031 thk silver filled silicone, low density	Mil-G-83528 type J	Pure silver particles
720-9172-XXXX	.031 thk silver filled silicone	Mil-G-83528 type E	Pure silver particles

* Consult for bulk material in various thicknesses. See page 3 for part number/ordering system.





Specify dimensions A-E using charts at right

KEY FEATURES

- Wide variety of materials and connector types
- Easily handled and installed
- Custom connector cluster gaskets available
- High shielding and sealing effectiveness
- Evaluation samples
- Product application assistance

Connector Sizes

Connector Shell Size	A ±.015"	B ±.015"	C ±.015"	D ±.015"	E ±.015"	Metex Part No.
6	.469 (11.91)	.375(9.53)	.738(18.75)	.141(3.58)	.141(3.58)	7XX-9XXX-0601
	.469(11.91)	.375(9.53)	.688(17.48)	.130(3.30)	.141(3.58)	7XX-9XXX-0602
	.500(12.70)	.437(11.10)	.687(17.45)	.109(2.77)	.141(3.58)	7XX-9XXX-0603
8	.594(15.09)	.630(16.00)	.840(21.34)	.135(3.43)	.141(3.58)	7XX-9XXX-0801
	.594(15.09)	.568(14.43)	.812(20.62)	.125(3.18)	.141(3.58)	7XX-9XXX-0802
	.594(15.09)	.500(12.70)	.875(22.23)	.156(3.96)	.141(3.58)	7XX-9XXX-0803
	.594(15.09)	.500(12.70)	.875(22.23)	.172(4.37)	.141(3.58)	7XX-9XXX-0804
9	.594(15.09)	.500(12.70)	.812(20.62)	.130(3.30)	.141(3.58)	7XX-9XXX-0805
	.719(18.26)	.750(18.26)	.965(24.51)	.135(3.43)	.141(3.58)	7XX-9XXX-0901
10	.719(18.26)	.750(18.26)	.965(24.51)	.135(3.43)	.222(5.64)	7XX-9XXX-0902
	.719(18.26)	.750(19.05)	.965(25.51)	.135(3.43)		7XX-9XXX-001
	.719(18.26)	.680(17.27)	.937(23.80)	.125(3.18)		7XX-9XXX-1002
	.719(18.26)	.625(15.88)	1.070(27.18)	.172(4.37)		7XX-9XXX-1003
	.719(18.26)	.625(15.88)	1.000(25.40)	.156(3.96)		7XX-9XXX-1004
	.719(18.26)	.625(15.88)	1.000(25.40)	.172(4.37)		7XX-9XXX-1005
	.719(18.26)	.625(15.88)	.938(23.83)	.130(3.30)		7XX-9XXX-1006
11	.719(18.26)	.698(17.73)	.950(24.13)	.138(3.51)		7XX-9XXX-1007
	.812(20.62)	.875(22.23)	1.060(26.92)	.141(3.58)		7XX-9XXX-1101
	.812(20.62)	.875(22.23)	1.060(26.92)	.141(3.58)	.206(5.23)	7XX-9XXX-1102
	.750(19.05)	.875(22.23)	1.046(26.57)	.141(3.58)	.163(4.14)	7XX-9XXX-1103

This is only a small listing of possible sizes, shapes and combinations.

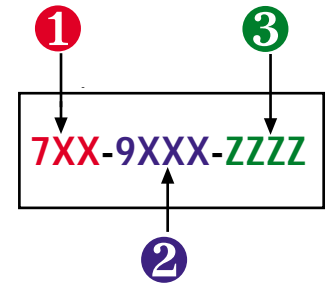
For other sizes and materials, please contact Metex Shielding Sales Engineering at 732-287-0800.

Connector Sizes (continued)

Connector Shell Size	A ±.015"	B ±.015"	C ±.015"	D ±.015"	E ±.015"	Metex Part No.
12	.812(20.62)	.875(22.23)	1.060(26.92)	.141(3.58)		7XX-9XXX-1201
	.813(20.65)	.750(19.05)	1.094(27.79)	.141(3.58)		7XX-9XXX-1202
	.813(20.65)	.750(19.05)	1.160(29.46)	.172(4.37)		7XX-9XXX-1203
	.813(20.65)	.750(19.05)	1.094(27.79)	.172(4.37)		7XX-9XXX-1204
	.813(20.65)	.750(19.05)	1.031(26.19)	.130(3.30)		7XX-9XXX-1205
13	.906(23.01)	1.005(25.53)	1.153(29.29)	.135(3.43)		7XX-9XXX-1301
	.906(23.01)	1.000(25.40)	1.156(29.36)	.141(3.58)	.206(5.23)	7XX-9XXX-1302
	.843(21.41)	.883(22.43)	1.146(29.11)	.141(3.58)		7XX-9XXX-1303
	.843(21.41)	1.000(25.40)	1.156(29.36)	.141(3.58)	.167(4.24)	7XX-9XXX-1304
14	.906(23.01)	1.005(25.53)	1.153(29.29)	.135(3.43)		7XX-9XXX-1401
	.906(23.01)	.938(23.83)	1.125(28.58)	.125(3.18)		7XX-9XXX-1402
	.906(23.01)	.875(22.23)	1.258(31.95)	.172(4.37)		7XX-9XXX-1403
	.906(23.01)	.875(22.23)	1.188(30.18)	.156(3.96)		7XX-9XXX-1404
	.906(23.01)	.875(22.23)	1.125(28.58)	.130(3.30)		7XX-9XXX-1405
	.906(23.01)	.875(22.23)	1.188(30.18)	.130(3.30)	.12(3.05)	7XX-9XXX-1406
	.906(23.01)	.875(22.23)	1.188(30.18)	.172(4.37)		7XX-9XXX-1407
15	.969(24.61)	1.135(28.83)	1.258(31.95)	.156(3.96)		7XX-9XXX-1501
	.969(24.61)	1.135(28.83)	1.258(31.95)	.156(3.96)	.206(5.23)	7XX-9XXX-1502
	.968(24.59)	1.078(27.38)	1.266(32.16)	.120(3.05)		7XX-9XXX-1503
	.968(24.59)	1.187(30.15)	1.281(32.54)	.141(3.58)	.141(3.58)	7XX-9XXX-1504
16	.969(24.61)	1.135(28.83)	1.258(31.95)	.156(3.96)		7XX-9XXX-1601
	.969(24.61)	1.063(27.00)	1.250(31.75)	.125(3.18)		7XX-9XXX-1602
	.969(24.61)	1.000(25.40)	1.321(33.55)	.172(4.37)		7XX-9XXX-1603

This is only a small listing of possible sizes, shapes and combinations.
For other sizes and materials, please contact Metex Shielding Sales Engineering at 732-287-0800.

HOW TO ORDER Metex Connector Gasket Part Number Anatomy



- **Select Product Family**—
 704 = Elastomer-filled screen cloth or expanded metal
 707 = Oriented wire matrix in silicone elastomer
 720 = Conductive particle-filled silicone elastomer
- **Select Material Type**—
 Select material type from the table on page 1
- **Select Connector Size**—
 Select connector size from the tables on pages 2 and 3

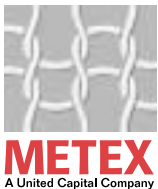


Metex Electronic Shielding Products

The diversity and versatility of our product line enables Metex to offer a wide range of custom solutions to optimize shielding effectiveness. We provide both off-the-shelf and custom designs in commercial and military-grade materials to ensure EMC integrity and quality. From prototype to volume production, our product line includes:

- Knitted Wire Mesh
- Vent Panels/Mesh Screens
- Spring Fingers
- Conductive Fabric
- Oriented Wire
- Braided Sleeving
- Shielded Windows, Instrumentation and Rooms
- Conductive Silicone Adhesive
- Shielding Tape/Foil Laminates
- Fabric Over Foam Gaskets
- Connector Gaskets
- Braided Rope
- Wire Mesh Gaskets

Our **Connector Gaskets** continue a long-standing Metex tradition of integrating the right designs, materials and production methods to meet customer needs for optimal performance at the lowest possible cost.



Metex Corporation
 970 New Durham Road
 Edison, New Jersey 08818
 Phone: 732-287-0800
 1-800-222-0969
 Fax: 732-287-8546
 E-mail: sales@metexcorp.com
 Website: www.metexcorp.com

Metex Europe
 4, Rue Pierre Brosolette
 92130 Issy Les Moulineaux
 France
 Phone: 33 (0)1 46 45 99 55
 Fax: 33 (0)1 46 45 99 07

Metex Mexico
 Metex Mexico
 Parque Industrial La Mesa
 Calle 34 sur s/n fracc. Rubio Edif. B. Suite B-2 La Mesa
 Tijuana, Baja California Mexico
 Phone: 011-52-66-45-11-49, 011-52-66-45-11-48
 Fax: 011-52-66-45-11-46